

Charles Harvey Craig (Harvey) was born in Foam Lake, Saskatchewan, on 4 June 1924. He is fondly remembered for his many contributions to forage crop entomology during his almost 40-year research career.

Following his service with the Canadian Navy in World War II, he obtained his BA from the University of Saskatchewan in 1949, and promptly joined the Dominion Entomological Laboratory in Saskatoon. His research role from 1949 to 1956 related to the agro-ecology of legume crop pollinators. This included the systematics of bumble bees and leaf-cutter bees, housing and propagating bee colonies, bee nesting and foraging behavior, and documenting bee pollination efficiency.

His role as a forage crop entomologist was greatly expanded in 1957 to include the biology, ecology and management of insect pests of forage and grass crops in western Canada. The major pests of concern were the alfalfa plant bug, sweet clover weevil and lygus bug. Following up on life history and population ecology studies, Harvey took an integrated approach to the management of this pest complex. He quantified pest population damage potential, screened insecticides, and developed biological control options, all the while minimizing their potential negative impact on the beneficial insects (most notably pollinators).

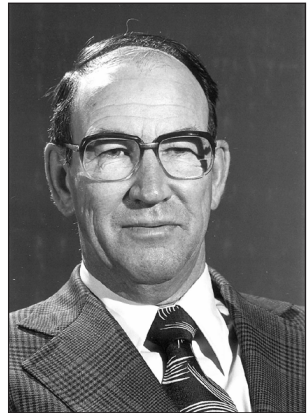
In addition to his investigative research expertise, Harvey was also a major contributor to forage crop extension, providing timely integrated insect management advice to growers and the seed crop industry. He was honored by the Saskatchewan Alfalfa Seed Producers Association prior to his retirement in 1987.

During his career, Harvey contributed significantly to our provincial and national entomological societies. He was President (1960) and Secretary/Treasurer (1958-1959) of the Entomological Society of Saskatchewan, and an Assistant Editor of *The Canadian Entomologist* from 1986 until his retirement.

His friends also remember Harvey's fondness for prairie sports. He hung up his insect sweep net for a curling broom every fall, and then switched over to golf clubs every spring. He served a term as President of the Saskatchewan Curling Association, and was a long-standing member of the Saskatoon Golf and Country Club.

Charles Harvey Craig passed away on 25 March 2019 at his home in Saskatoon.

Owen Olfert  
AAFC Saskatoon Research Centre



**Charles Harvey Craig  
(1924–2019)**

